

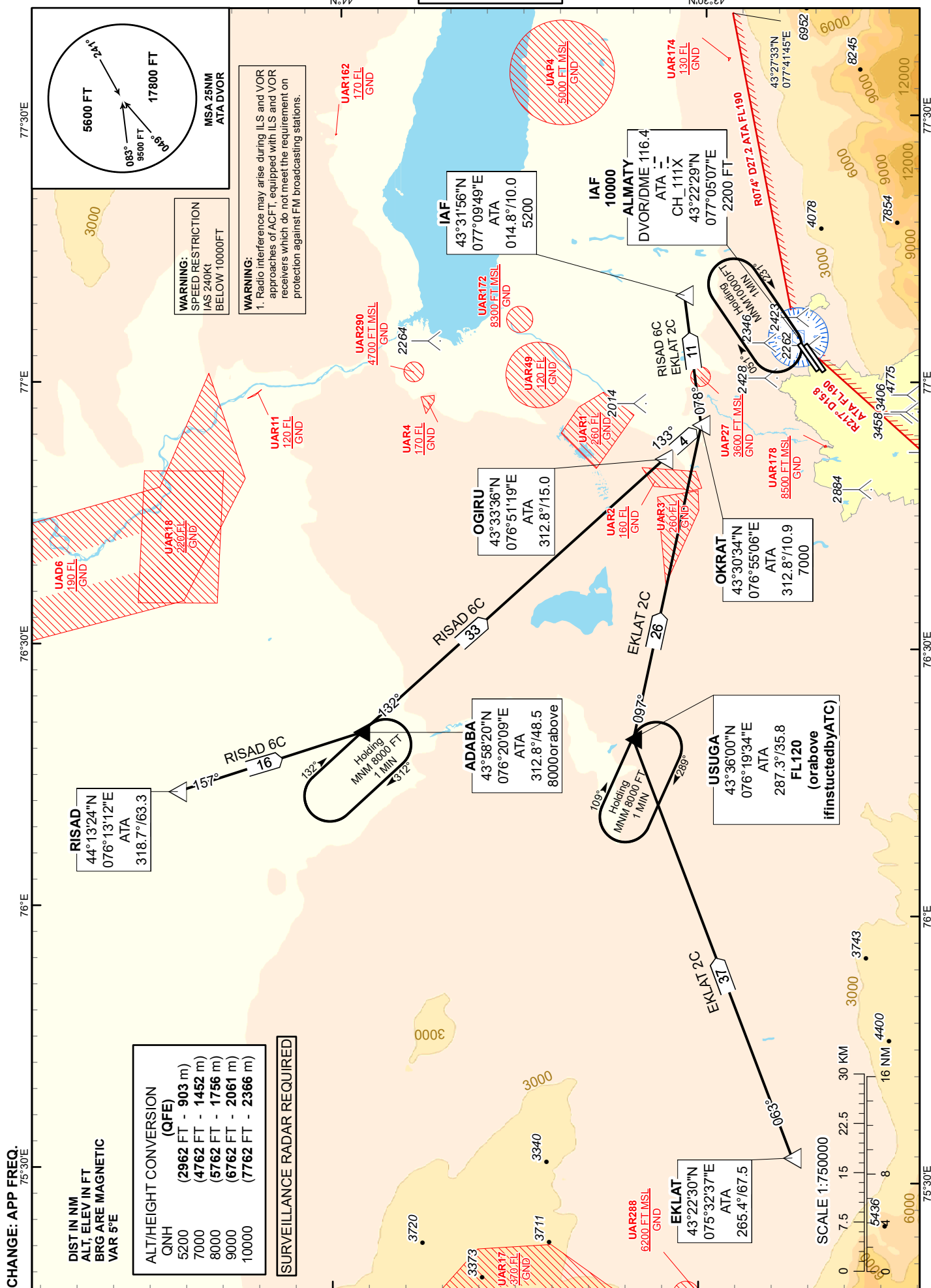
STANDARD ARRIVAL
CHART - INSTRUMENT
(STAR) - ICAO

TRANSITION ALTITUDE
10000 FT

ALMATY APPROACH 118.3
ALMATY RADAR 126.8
ALMATY TOWER 119.4
ALMATY ATIS (EN) 129.8
ALMATY ATIS (RU) 135.1

RISAD 6C, EKLAT 2C

ALMATY
RWY 23L/R



Standard Arrival Routes Instrument (STAR) ALMATY RWY 23 L/R

RISAD 6C

After crossing RISAD R318.7° D63.3NM ATA, proceed on track 157° to ADABA R312.8° D48.5NM ATA.

After crossing ADABA, turn LEFT on track 132° to OGIRU R312.8° D15.0NM ATA.

After crossing OGIRU, proceed on track 133° to OKRAT R312.8° D10.9NM ATA.

After crossing OKRAT, turn LEFT on track 078° to IAF R014.8° D10.0NM ATA.

Cross ADABA at 8000 FT or above.

Cross OKRAT at 7000 FT.

Cross IAF at 5200 FT.

EKLAT 2C

After crossing EKLAT R265.4° D67.5NM ATA, proceed on track 063° to USUGA R287.3° D35.8NM ATA.

After crossing USUGA, turn RIGHT on track 097° to OKRAT R312.8° D10.9NM ATA.

After crossing OKRAT turn LEFT on track 078° to IAF R014.8° D10.0NM ATA.

Cross USUGA at FL120 (or above, if instructed by ATC).

Cross OKRAT at 7000 FT.

Cross IAF at 5200 FT.